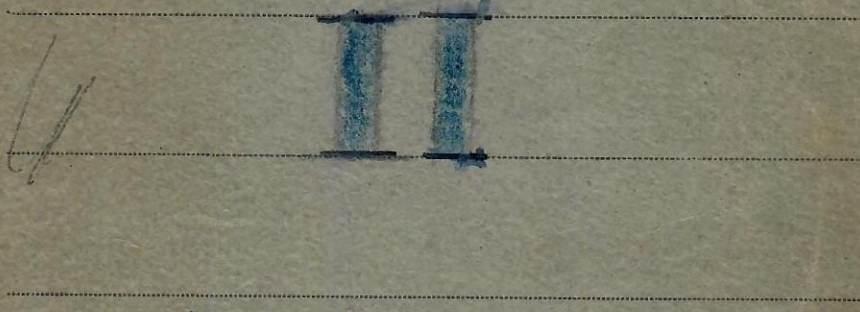
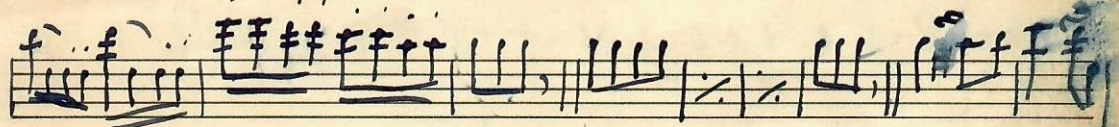
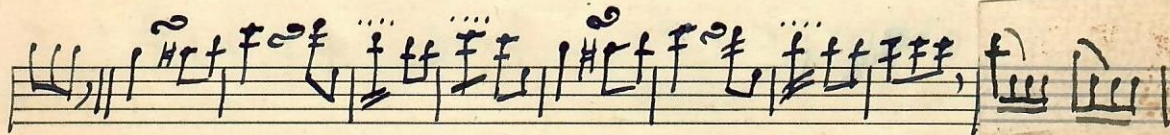
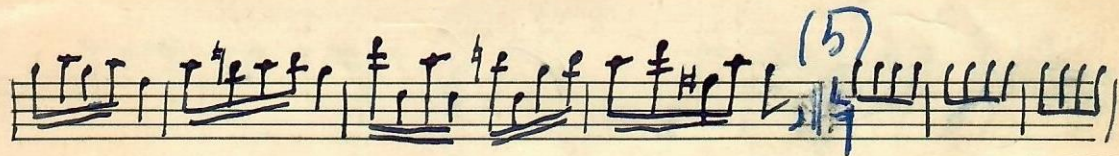
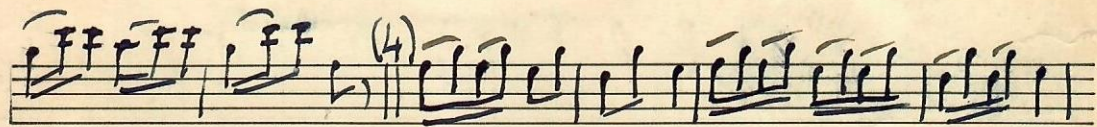
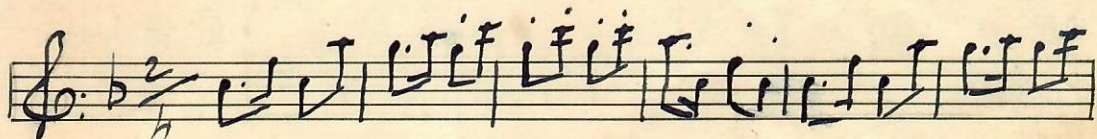
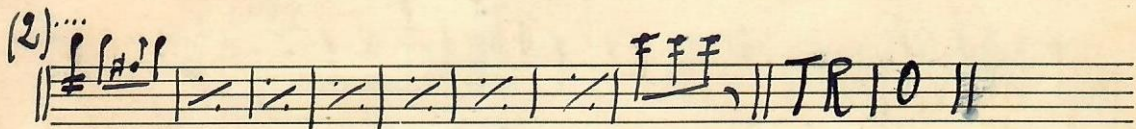
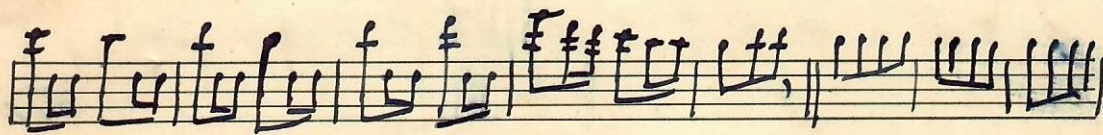
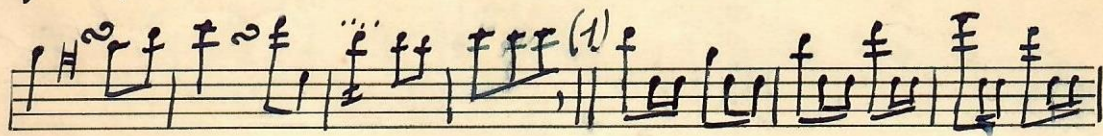
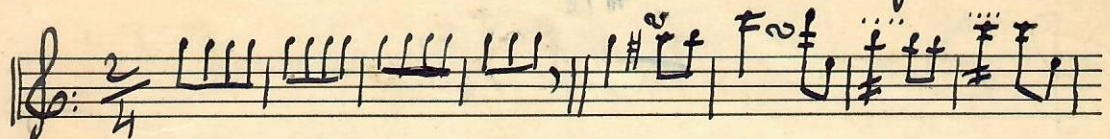


11

Quaderno di Musica





SOGNO DI FANCIULLA-VALZER- e. Gatti

Handwritten musical score for "SOGNO DI FANCIULLA-VALZER" by E. Gatti. The score is written on ten staves. It begins with a treble clef, a key signature of one sharp (F#), and a 3/4 time signature. The notation includes various note values, rests, and dynamic markings. A "TRIO" section is indicated by a double bar line and a change in key signature to one flat (Bb) and time signature to 3/4. The piece concludes with a double bar line and the initials "D.C.".

3

OLG. A. Mazurka - A. B.

Handwritten musical score for OLG. A. Mazurka - A. B. in 3/4 time. The score consists of 12 staves of music. The notation includes various dynamics (p, f, ff), articulations (accents, slurs), and performance markings (trios, 3/4, 6). The piece concludes with the instruction "D.C. Alla mazurka" and a final flourish.



4

- farfallino - Valzer - Ignoto

tail.

8

FINE

*Qui potete la prima parte
vedi 6no*

6no

tullo

Da Capo

[Handwritten signature]

6

Sprizzi e Sbrazzi - Polka *minuti: 150*

Handwritten musical score for Sprizzi e Sbrazzi - Polka, measures 1-12. The score is written on a grand staff (treble and bass clefs) in 2/4 time. It features a series of rhythmic patterns, primarily eighth and sixteenth notes, with various dynamics and articulations. The piece concludes with a double bar line and the word "fine".

Handwritten musical score for Sprizzi e Sbrazzi - Polka, measures 13-15. The score is written on a grand staff (treble and bass clefs) in 2/4 time. It continues the rhythmic patterns from the previous section. The piece concludes with a double bar line and the instruction "D.C. Tutto".

Five empty musical staves, consisting of two grand staves (treble and bass clefs) each, located at the bottom of the page.

7

Volontari - marcia -

Olivia Metra
Ric. Barattini
1947

Musical staff with treble clef, 2/4 time signature, and notes.

(1)

Musical staff with notes and a first ending bracket.

Musical staff with notes and a first ending bracket.

Musical staff with notes and a second ending bracket.

Musical staff with notes and a first ending bracket.

Musical staff with notes and a first ending bracket.

Handwritten scribble

Trio

Musical staff with bass clef, 2/4 time signature, and notes.

Handwritten scribble

Musical staff with notes and first/second ending brackets.

Handwritten scribble

Musical staff with notes and first ending brackets.

Musical staff with notes and first ending brackets.

Musical staff with notes and first ending brackets.

Musical staff with notes and first ending brackets.



Handwritten notes and signature
D. C.utto

Grave - POLKA - C. TESTI
POLKA

Introd.

1a 2a

TRIO

Dalla POLKA AL FINE

DAL S. AL FINE

9

Addio Giovinezza - Mamma

Donnay vol.
Rid. Bamberini

2/4

(1)

sol

1a 2a (2)

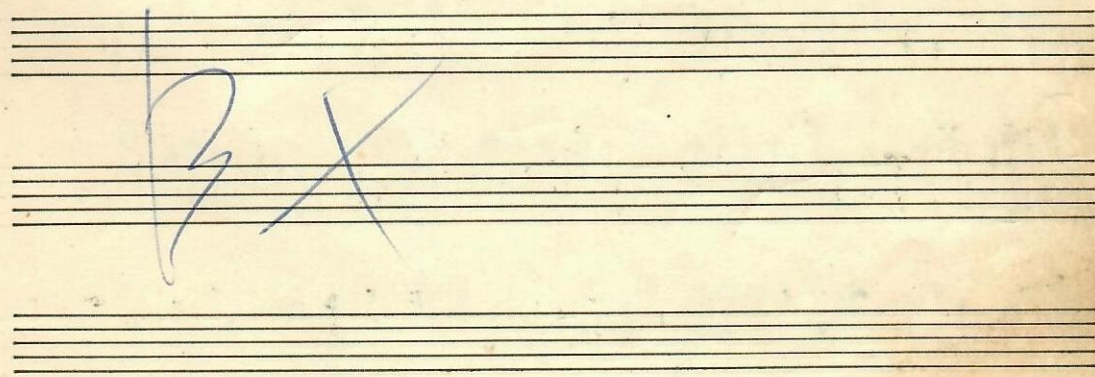
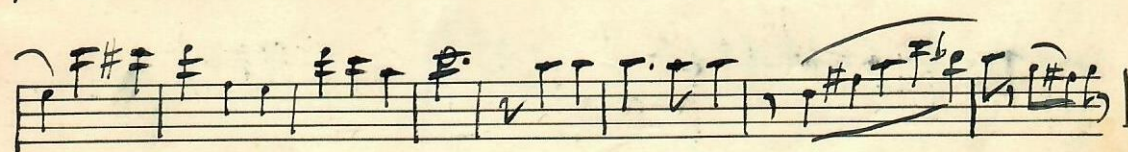
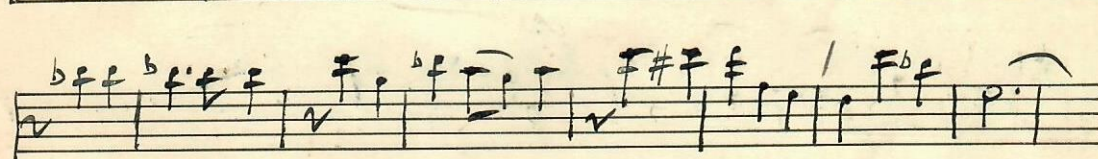
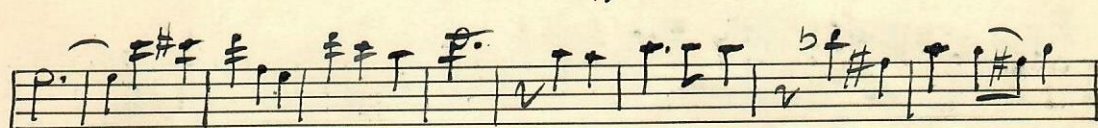
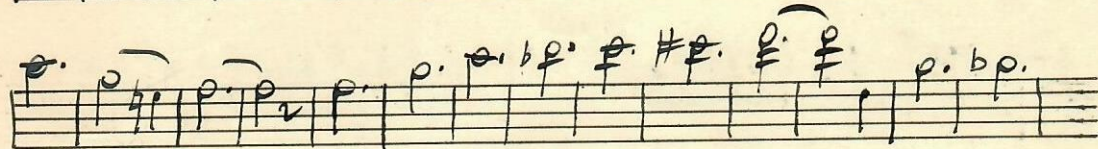
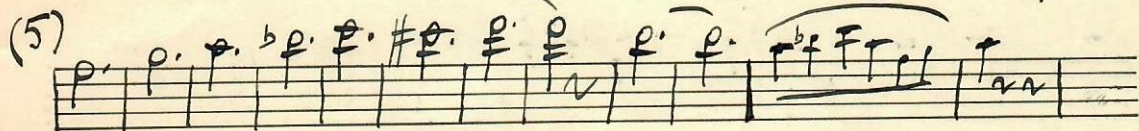
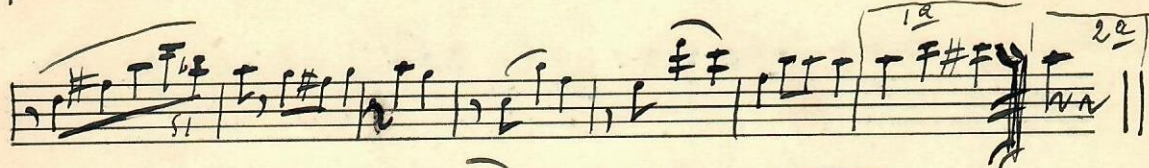
3

TRIO 2/4

(4)

III

DAL S. AL FINE



BATTAGLIERO - Valz.

Introd.

Handwritten musical notation for the introduction, featuring a treble clef, a 3/4 time signature, and a key signature of one sharp (F#). The notation includes various rhythmic values and accidentals, with a *rall.* marking above the staff.

VALZER (2)

Handwritten musical notation for the first measure of the waltz, marked with a 3/4 time signature and a 4-measure rest.

Handwritten musical notation for the second measure of the waltz.

Handwritten musical notation for the third measure of the waltz, including a *p.* (piano) dynamic marking and a (3) measure rest.

Handwritten musical notation for the fourth measure of the waltz, including a (4) measure rest.

Handwritten musical notation for the fifth measure of the waltz.

Handwritten musical notation for the sixth measure of the waltz, including a (5) measure rest.

Handwritten musical notation for the seventh measure of the waltz, including a (6) measure rest.

Handwritten musical notation for the eighth measure of the waltz, including a (7) measure rest.

Handwritten musical notation for the ninth measure of the waltz.

Handwritten musical notation for the tenth measure of the waltz, concluding with a double bar line and the word *Segue*.

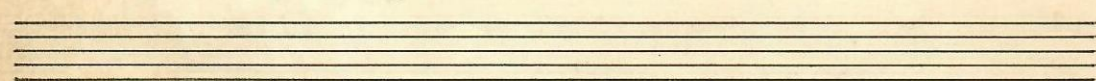
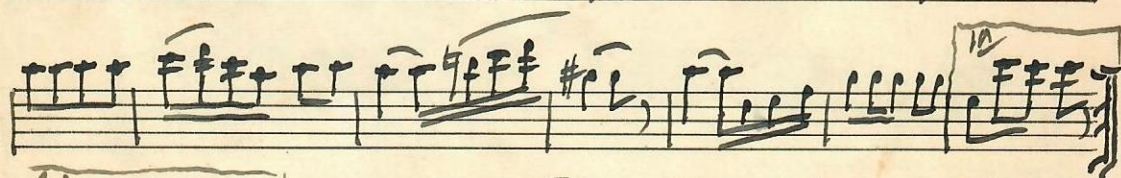
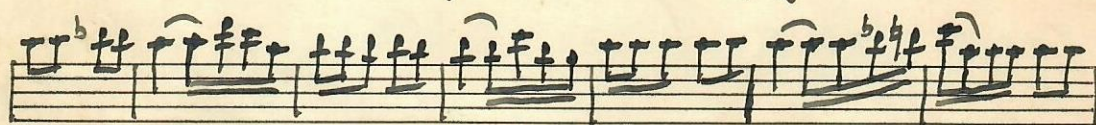
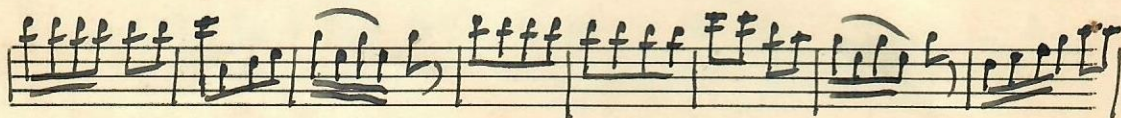
TRIO (8)

Handwritten musical score for Trio (8). The score is written on ten staves. The first staff begins with a treble clef, a key signature of one flat (B-flat), and a 3/4 time signature. The music consists of rhythmic patterns and chords. The second staff has a 'do' label above it. The third staff has a 'trillo' label above it. The fourth staff has a 'trillo' label above it. The fifth staff has a 'trillo' label above it. The sixth staff has a 'trillo' label above it. The seventh staff has a 'trillo' label above it. The eighth staff has a 'trillo' label above it. The ninth staff has a 'trillo' label above it. The tenth staff has a 'trillo' label above it. The score ends with a double bar line and repeat signs.



♩ PETTIROSSO - POLKA

A. B.



13)

DEFILIR - MARCIA -

A Barabbi
Rid. Barabbi

TR10



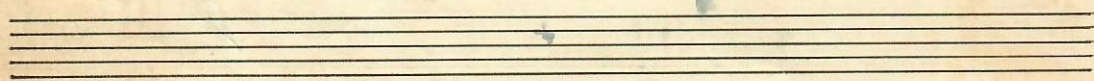
LASCIAMMI - MAZURKA.

A. Bonattori

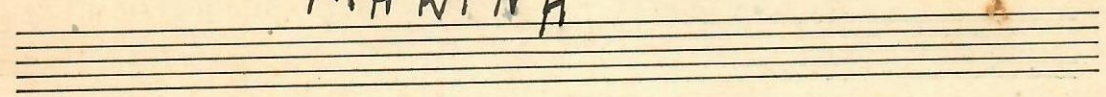
Introd.

MAZUR

Tr 10



MARINA



Handwritten musical score for 'MARINA' on ten staves. The notation includes various rhythmic values, accidentals, and dynamic markings such as 'f' (forte) and 'p' (piano). The score is written in a single system across the staves. The first staff begins with a treble clef and a common time signature. The music features a mix of eighth and sixteenth notes, often beamed together, and includes rests and phrasing slurs. The notation is somewhat dense and appears to be a working draft or a personal manuscript.



MARIO LAINE - REVIL. REMARQUE

Handwritten musical score on aged paper. The score consists of ten staves of music. The first staff begins with a treble clef and a common time signature (C). The notation is dense, featuring many vertical stems and beams, with some notes marked with 'f' (forte) and 'p' (piano). There are several measures with rests. The second staff continues the notation with similar density. The third and fourth staves show more complex rhythmic patterns with beams and slurs. The fifth staff has a measure with a '16' above it, and the sixth staff has a measure with a '24' above it. The seventh and eighth staves continue the dense notation. The ninth staff has a measure with a '16' above it and another with a '24' above it. The tenth staff is mostly empty, with a few notes and a blue ink mark. The paper shows signs of age, including some foxing and a small tear near the bottom left.

Four empty musical staves at the bottom of the page, with a small blue ink mark on the first staff.

COLONEL BOGEV.

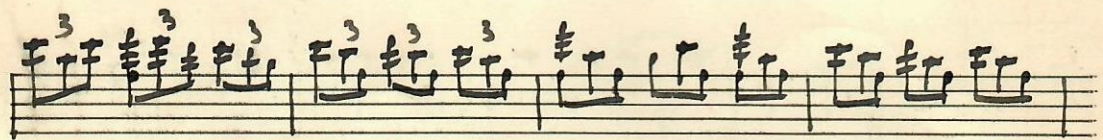
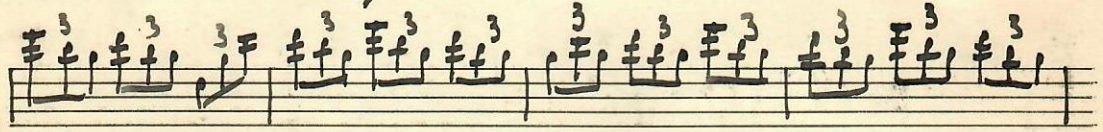
Handwritten musical score for 'Colonel Boge' in bass clef, 4/4 time. The score consists of ten staves of music. It begins with a treble clef and a 4/4 time signature. The notation includes various note values (quarter, eighth, and sixteenth notes), rests, and dynamic markings such as 'f' (forte) and 'p' (piano). There are also some accidentals (sharps and flats) and phrasing slurs. The piece concludes with the word 'FINE' written at the end of the final staff.



CELEBRE-MAZURKA - MIGLIAVACCA.

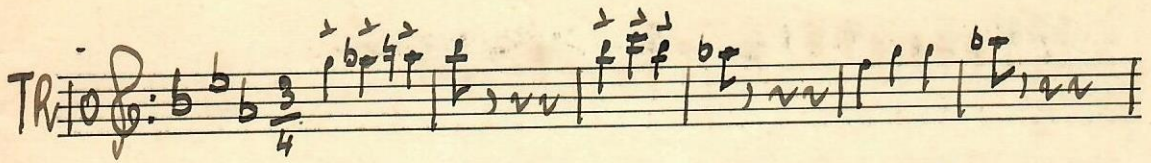


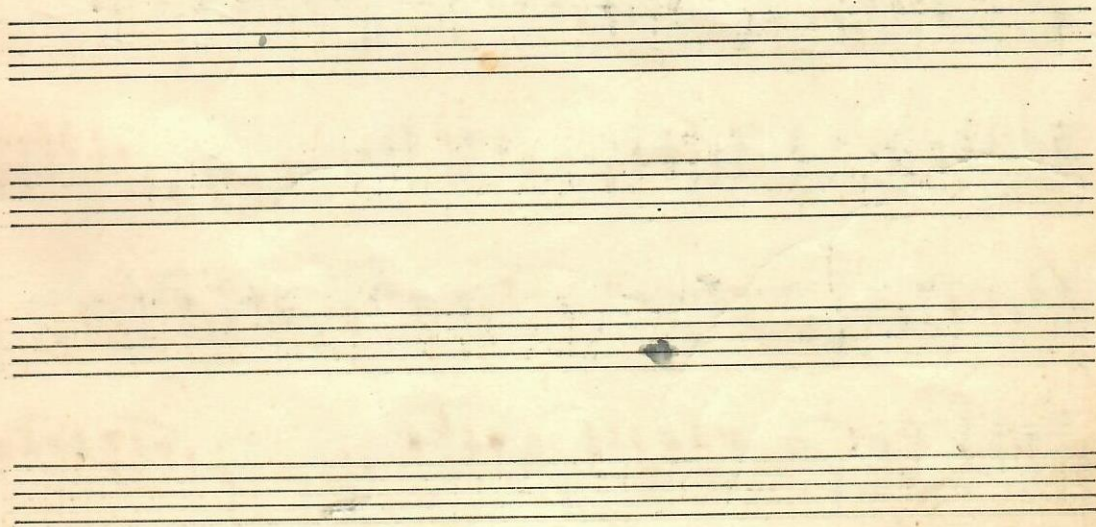
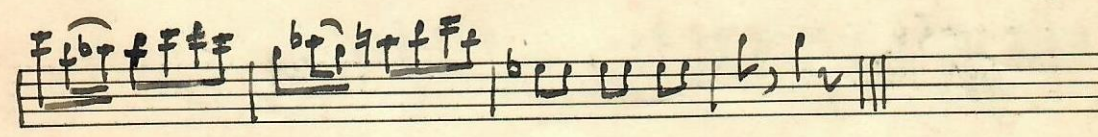
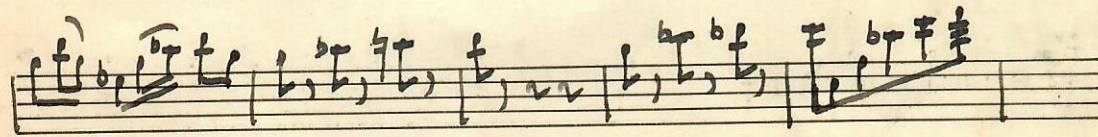
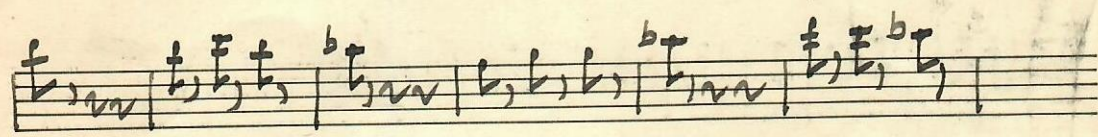
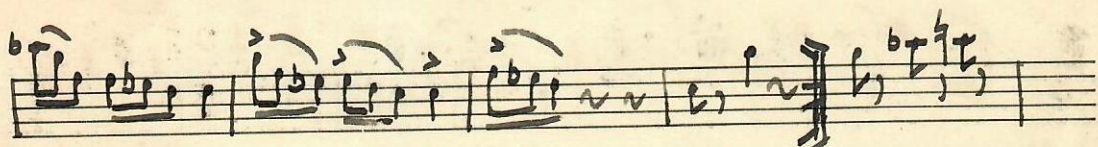
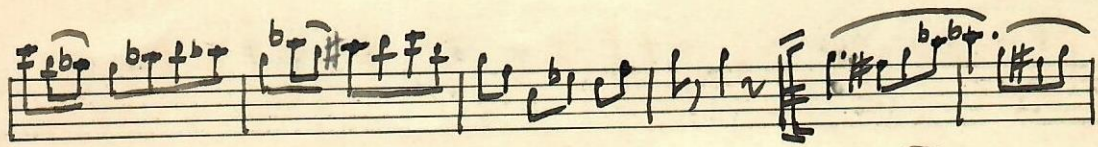
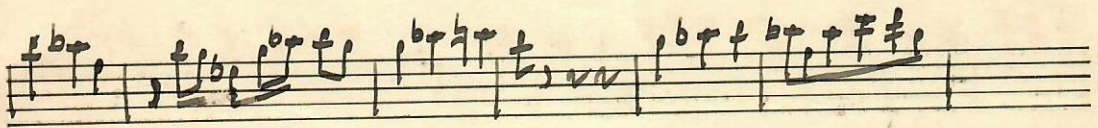
I VARIAZIONE



II VARIAZIONE



TR 



CANZONI - VARIE

Accompaniment

Intre

valzer

rall.

MAXIMAO

rapp.

Luca cantabile

Handwritten musical notation on a single staff, featuring various rhythmic values and accidentals.

Handwritten musical notation on a single staff, including the annotation *rall. MAZURKA* above the staff.

Handwritten musical notation on a single staff, showing a sequence of notes and rests.

Handwritten musical notation on a single staff, featuring a series of notes and rests.

Handwritten musical notation on a single staff, including the annotation *rall Pastor* above the staff.

Handwritten musical notation on a single staff, showing a sequence of notes and rests.

Handwritten musical notation on a single staff, featuring a sequence of notes and rests.

Handwritten musical notation on a single staff, including the annotation *rall Pastore di Pisa* above the staff.

Handwritten musical notation on a single staff, showing a sequence of notes and rests.

Handwritten musical notation on a single staff, including the annotation *fa fa Finto* above the staff.

Handwritten musical notation on a single staff, including the annotation *Accelerando* above the staff.

Handwritten musical notation on a single staff, showing a sequence of notes and rests.



POLKA

Improvisi di

ALDO ROVANO I

Handwritten musical notation on a single staff, starting with a treble clef, a 2/4 time signature, and a key signature of one flat (B-flat). The notation consists of a series of eighth and sixteenth notes, some beamed together.

Handwritten musical notation on a single staff, continuing the melody from the previous staff with similar rhythmic patterns.

Handwritten musical notation on a single staff, featuring a section labeled "1a" and "2a" with a bracket above it, and the word "FINE" written above the staff.

Handwritten musical notation on a single staff, showing a continuation of the piece with various note values and rests.

Handwritten musical notation on a single staff, including a section with a key signature change to one sharp (F#).

Handwritten musical notation on a single staff, with a section labeled "1a" and "2a" and a double bar line.

Handwritten musical notation on a single staff, continuing the melodic line.

Handwritten musical notation on a single staff, featuring a section with a key signature change to one sharp (F#).

Handwritten musical notation on a single staff, starting with the word "TRIO" and a 2/4 time signature, and a key signature of one flat (B-flat).

Handwritten musical notation on a single staff, continuing the Trio section.

Handwritten musical notation on a single staff, with a section labeled "1a" and "2a" and a double bar line.

dal 8 si ripete la 1a parte una volta sola

