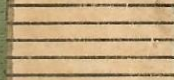


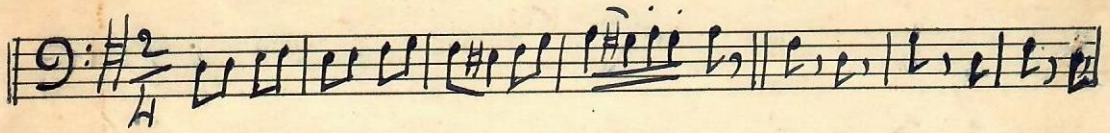


Quaderno di Musica

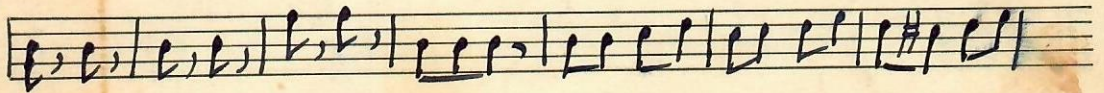
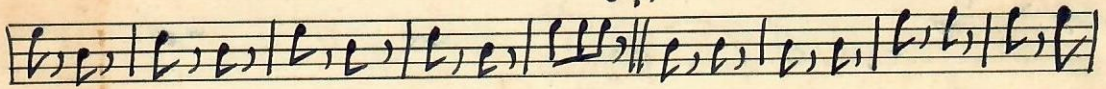


VII

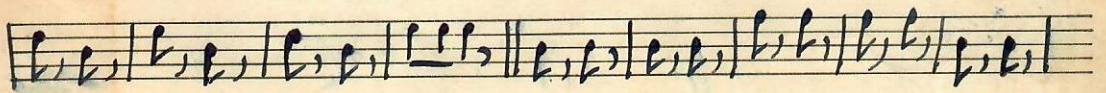
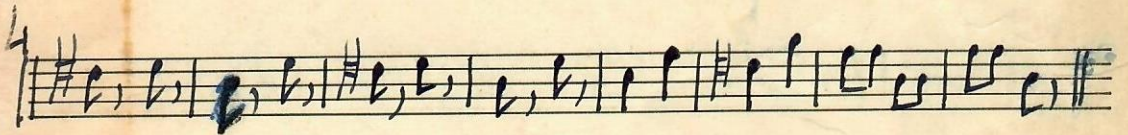
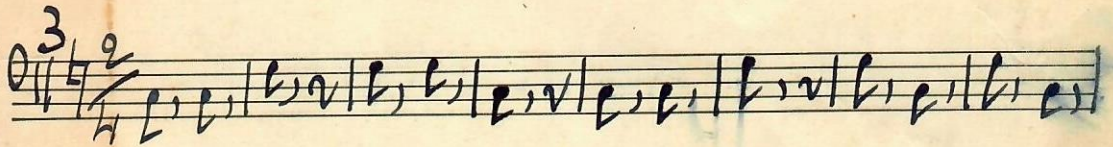




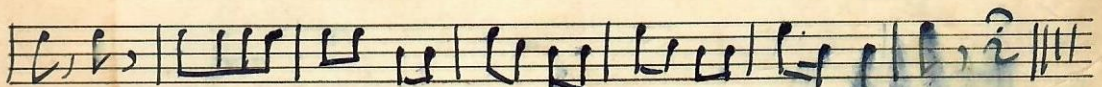
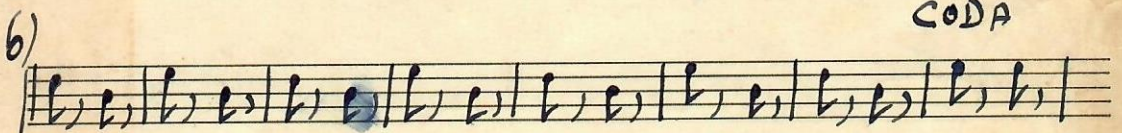
(1)



(2)



CODA



SONO DI FANCIULLA - ~~canon~~ e Testi

Handwritten musical score for a single voice part. The notation is on a single staff with a treble clef, a key signature of one sharp (F#), and a time signature of 3/4. The music consists of several lines of notes, including rests and accidentals. A double bar line with repeat dots appears at the beginning. The word "FINE (1)" is written above the staff in the third line. A blue ink correction "Fa" is written above the staff in the fourth line. The piece concludes with a double bar line and the word "fine" written below the staff.

Handwritten musical score for a Trio section. The notation is on a single staff with a treble clef, a key signature of one sharp (F#), and a time signature of 3/4. The music consists of several lines of notes, including rests and accidentals. The word "TRIO" is written in blue ink on the left side of the first line. The piece concludes with a double bar line and the initials "D.E.T." written below the staff.

3

OLGA - MAZURKA

A.B.

Handwritten musical notation on a single staff, starting with a treble clef, a key signature of one sharp (F#), and a 3/4 time signature. The notation includes various rhythmic values and accidentals.

Handwritten musical notation on a single staff, continuing the piece. It includes measure numbers 1 through 15 written above the staff.

Handwritten musical notation on a single staff, continuing the piece. It includes measure numbers 16 through 20 written above the staff.

Handwritten musical notation on a single staff, concluding the first section with a double bar line and the word "Fine" written below the staff.

Handwritten musical notation on a single staff, starting a new section labeled "TRIO" at the beginning. The time signature changes to 3/4.

Handwritten musical notation on a single staff, continuing the Trio section.

Handwritten musical notation on a single staff, continuing the Trio section. It begins with a circled number "6" above the staff.

Handwritten musical notation on a single staff, continuing the Trio section.

Handwritten musical notation on a single staff, continuing the Trio section.

Handwritten musical notation on a single staff, concluding the Trio section with the instruction "Da Capo" and a double bar line.

Three empty musical staves at the bottom of the page. The numbers 28, 35, and 44 are written in the first staff.



4

Farfallino - Valzer - Tango

Intro ^{no}

f. p. p. (1)

(3) FINE

f (4)

p.

mi *f.*

p. p.

fine

Trio

D. B. al Valzer

5

Alla Viennese - Valse - Pettegoin

Op. 1

9 $\frac{3}{4}$

(3)

(4)

(5) (6)

7

(8)

Ado



Sprizzi e Sprazzi. Polka.

Handwritten musical notation on a single staff, starting with a treble clef, a key signature of one sharp (F#), and a 2/4 time signature. The notation consists of a series of rhythmic patterns represented by vertical stems and beams.

Handwritten musical notation on a single staff, continuing the rhythmic patterns from the previous staff. It includes some slurs and accents over the notes.

Handwritten musical notation on a single staff, continuing the rhythmic patterns. The notation is dense with vertical stems.

Handwritten musical notation on a single staff, continuing the rhythmic patterns. It features some slurs and accents, similar to the second staff.

Handwritten musical notation on a single staff, ending with the word "fine" and a double bar line.

Handwritten musical notation on a single staff, starting with a treble clef, a key signature of one sharp (F#), and a 2/4 time signature. The notation includes some notes with stems and beams.

Handwritten musical notation on a single staff, continuing the notation from the previous staff.

Handwritten musical notation on a single staff, ending with the word "Tutto" and a double bar line.

Four empty musical staves at the bottom of the page.

7

Voluntari - Marcia - O. Metea

Handwritten musical notation on a single staff, starting with a treble clef, a key signature of one sharp (F#), and a 2/4 time signature. The music consists of a series of eighth and sixteenth notes.

Handwritten musical notation on a single staff, continuing the melody from the previous staff.

Handwritten musical notation on a single staff, featuring a double bar line and a fermata over a note, with a second ending bracket labeled '2)' above it.

Handwritten musical notation on a single staff, continuing the piece.

Handwritten musical notation on a single staff, including first and second ending brackets labeled '1a' and '2a' above the staff, and ending with the word 'Fine' and a double bar line.

Handwritten musical notation on a single staff, starting with a treble clef, a key signature of one sharp (F#), and a 2/4 time signature. It includes a double bar line and a fermata.

Handwritten musical notation on a single staff, including first and second ending brackets labeled '1a' and '2a' above the staff, and ending with a double bar line.

Handwritten musical notation on a single staff, consisting of a series of eighth and sixteenth notes.

Handwritten musical notation on a single staff, including first and second ending brackets labeled '1a' and '2a' above the staff, and ending with a double bar line. The word 'mi' is written below the staff.

Handwritten musical notation on a single staff, starting with a treble clef, a key signature of one sharp (F#), and a 2/4 time signature. It includes a double bar line and a fermata. The number '51' is written to the left of the staff.

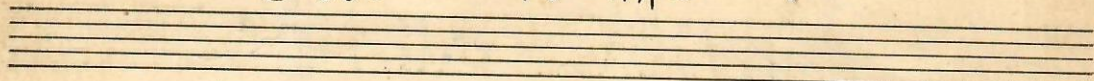
Handwritten musical notation on a single staff, ending with a double bar line and the signature 'D. O. Metea'.

Three empty musical staves at the bottom of the page.

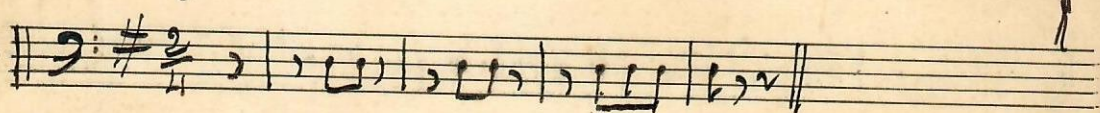


Jride - POLKA -

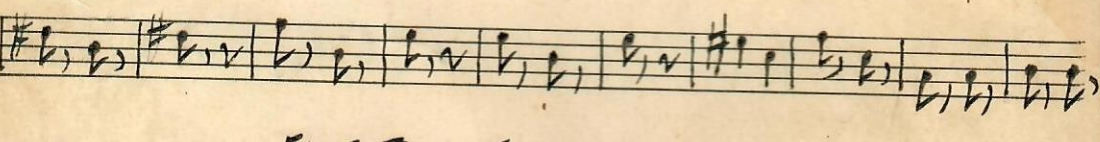
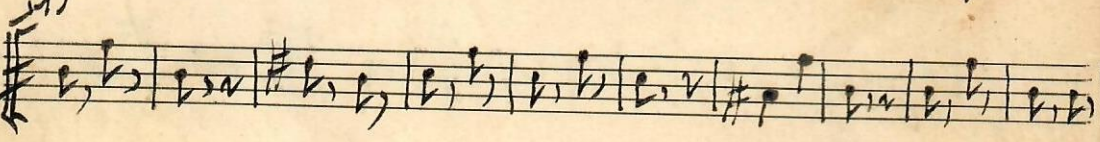
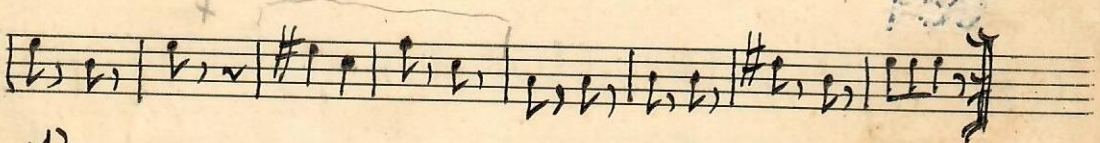
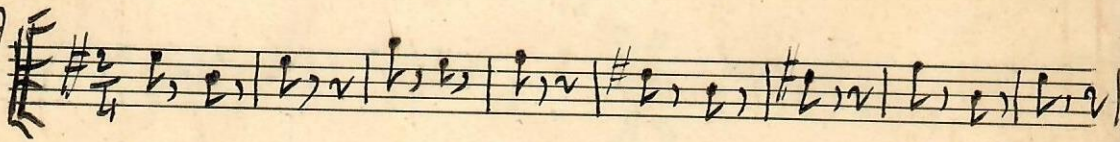
C. TESTI



Introv.



POLKA



FINE TRIO



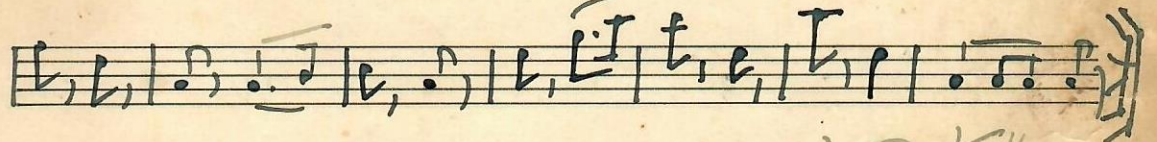
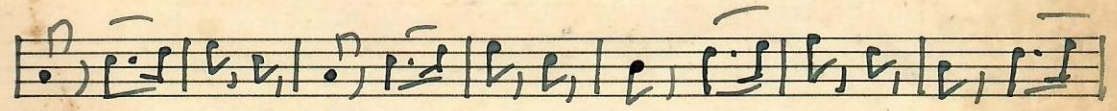
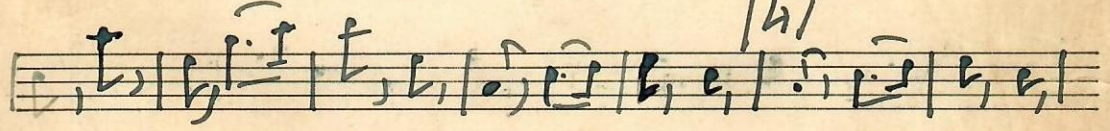
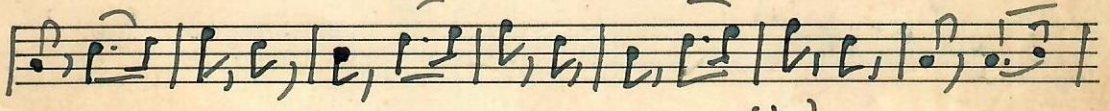
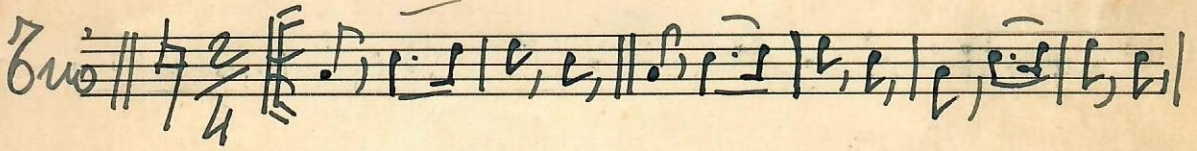
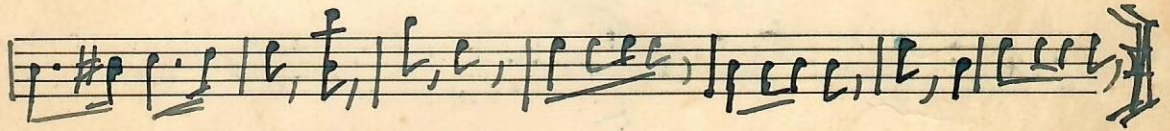
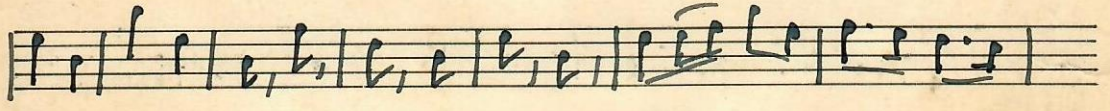
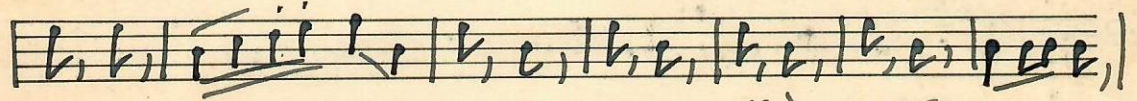
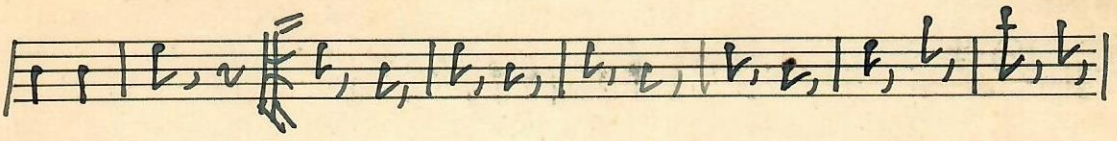
Dalla Polka al FINE



D. E. A. POLKA

9

Addio Giovinezza - Maria - Giuseppe Barottini



G. B. Fatto



28



10

ALBA DAMORE-VALZER. C. TESTI

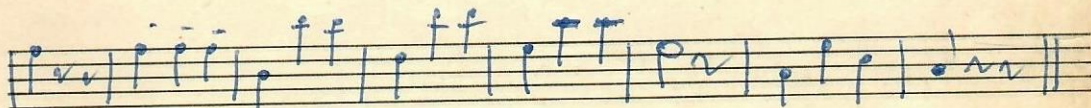
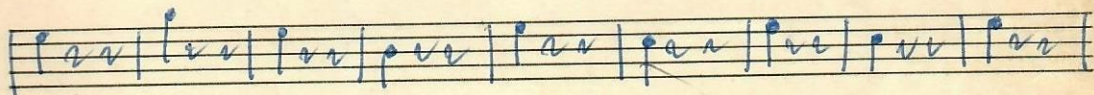
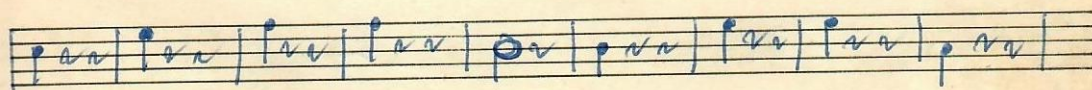
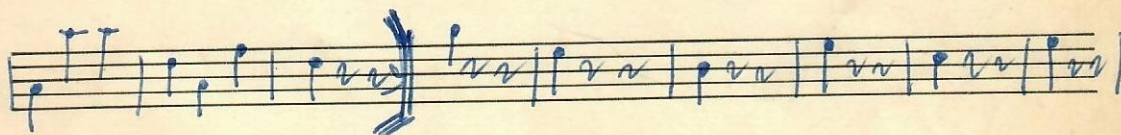
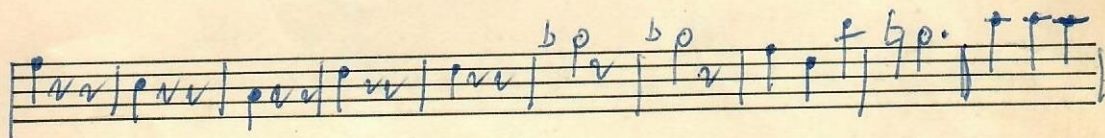
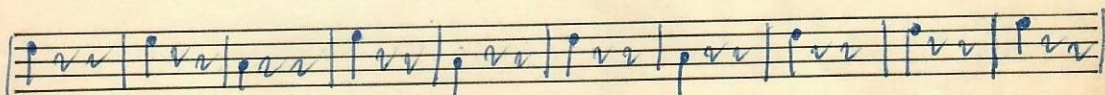
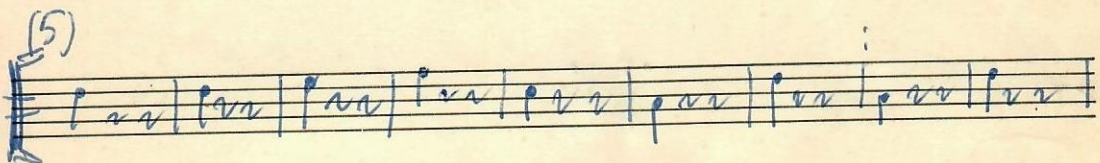
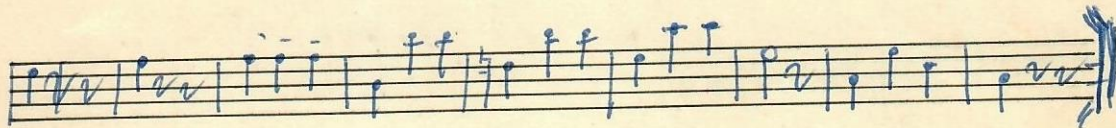
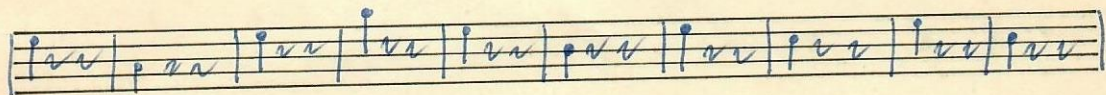
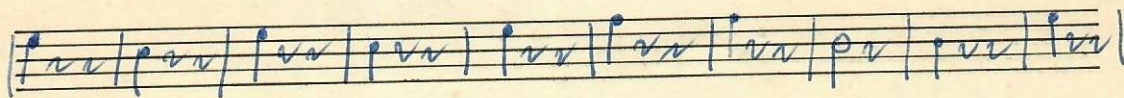
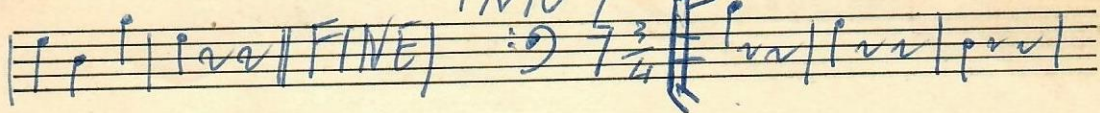
Andantissimo

Introd.

VALZER

FINE (2)

TRIO (4)



D. B. al Valtèr fino al fine



Battagliero - Valzer - Pattucini

Introd. *al*

trill

Valz (1)

TRIO (8)

Handwritten musical score on ten staves. The notation includes various rhythmic values, accidentals, and dynamic markings. The score is heavily annotated with blue ink, including circled numbers (9, 10, 12, 22) and the word "salto" written in a cursive script. Diagonal lines are drawn across the staves, possibly indicating a specific performance technique or a section to be omitted. The first staff begins with a key signature of one sharp (F#) and a common time signature (C). The notation is dense and appears to be a complex piece of music, possibly for a harp or a similar instrument.



JE PETTIR OSSO - POLKA. A.B.

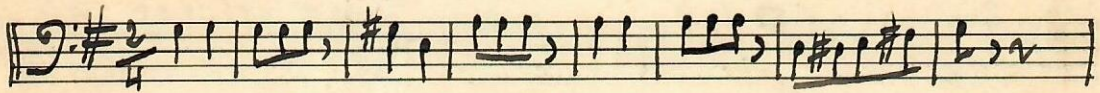
Handwritten musical notation for the first section of 'Je Pettir Oso - Polka'. It consists of five staves. The first staff is in bass clef with a key signature of one sharp (F#) and a 2/4 time signature. The notation includes various rhythmic values, accidentals, and dynamic markings. A first ending bracket labeled '(1)' spans the final two measures of the first staff. The second and third staves continue the melody with similar notation. The fourth staff features a triplet of eighth notes marked with a '3)' above it. The fifth staff concludes the section with a double bar line and a blue ink flourish.

TRIO

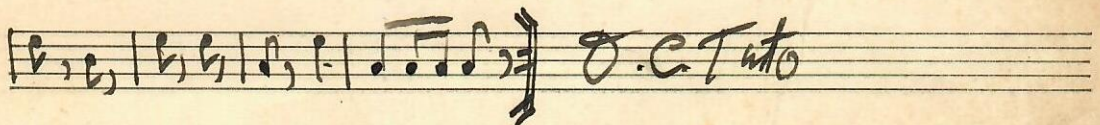
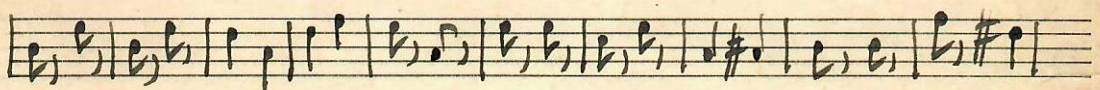
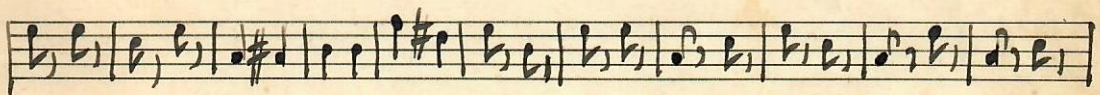
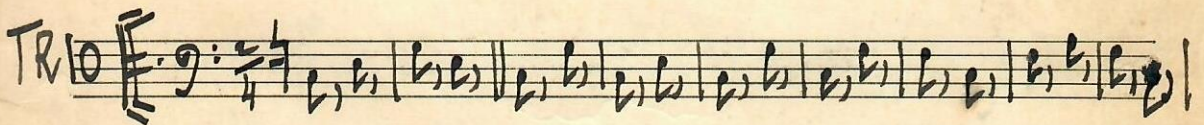
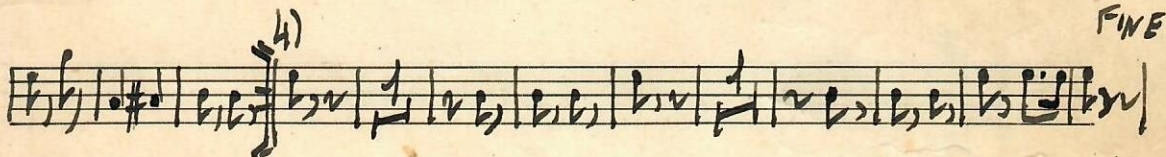
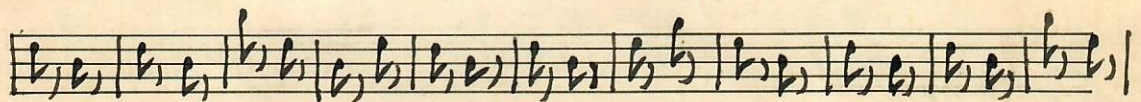
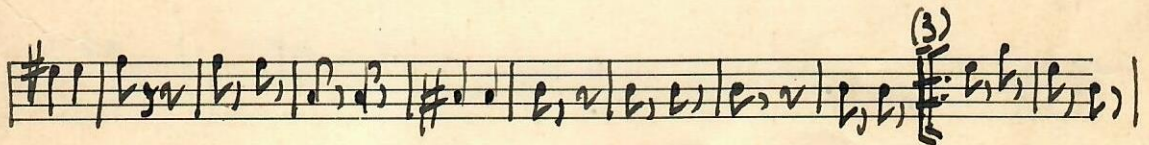
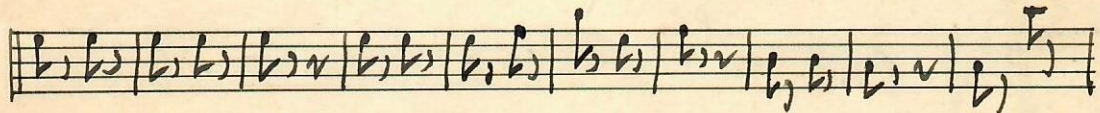
Handwritten musical notation for the Trio section of 'Je Pettir Oso - Polka'. It consists of four staves. The first staff is in bass clef with a key signature of one sharp (F#) and a 2/4 time signature. The notation includes various rhythmic values, accidentals, and dynamic markings. A first ending bracket labeled '(4)' spans the final two measures of the first staff. The second and third staves continue the melody with similar notation. The fourth staff features a triplet of eighth notes marked with a '(5)' above it. The section concludes with a double bar line and a blue ink flourish.

S.G. Tutto

DE FILIR - MARCIA - A. Baracchi



1



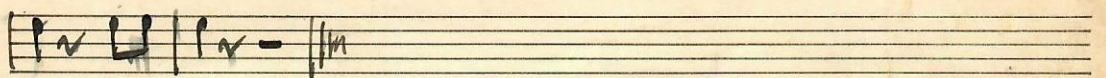
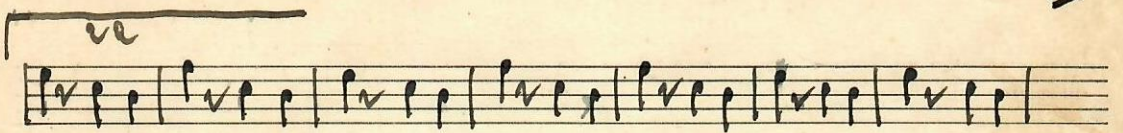
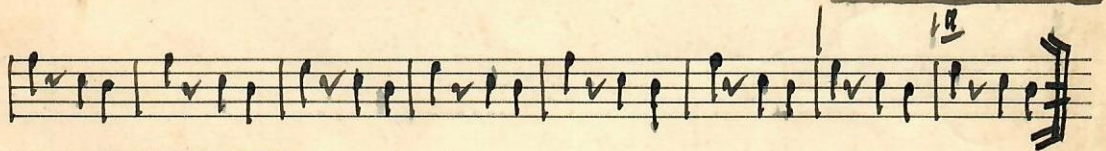
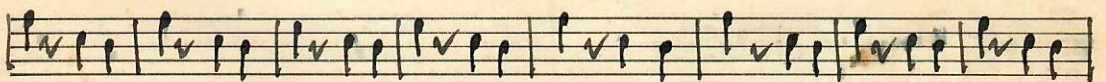
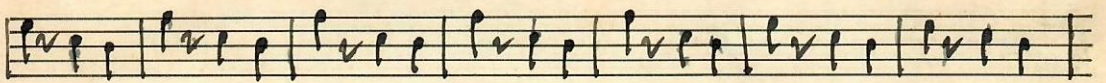
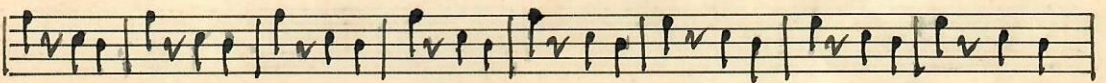
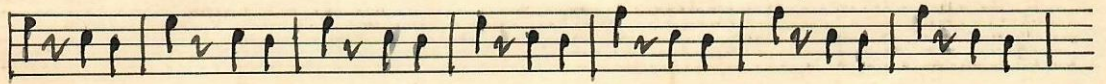
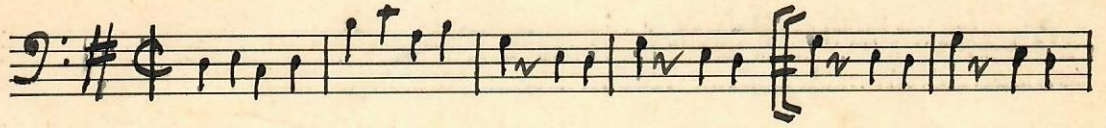
LASCIA MI - MAZURKA A. B.

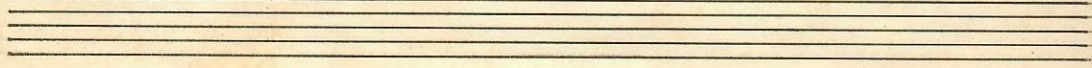
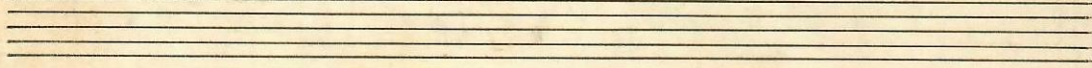
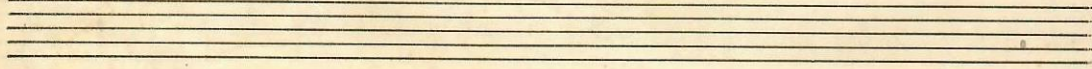
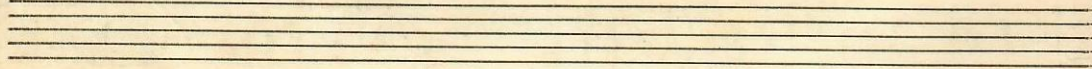
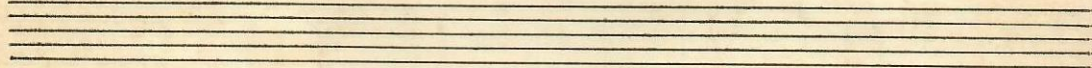
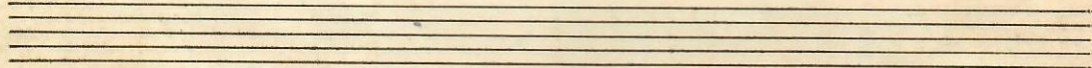
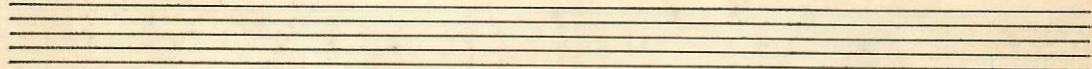
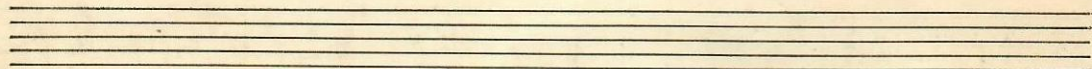
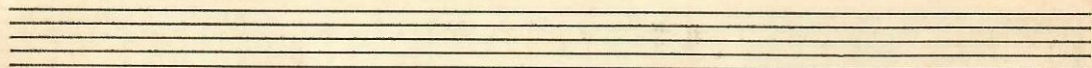
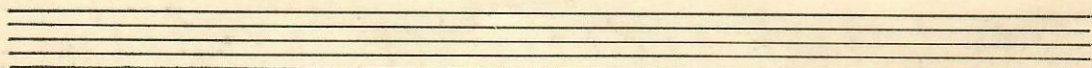
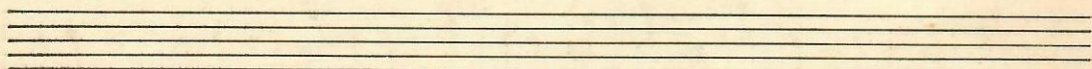
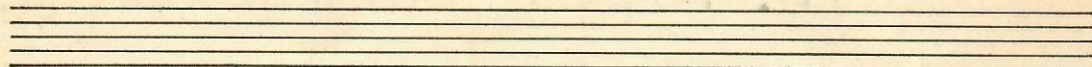
Introd.

MAZURKA

TRIO

MARINA - Rocco Granata -





COLONEL - BOGEV. ALFORD.

Handwritten musical score for "Colonel - Boge" by Alford. The score consists of ten staves of music. The first staff begins with a treble clef and a common time signature. The notation includes various rhythmic values, accidentals, and dynamic markings such as "p" and "dim". There are also some blue ink annotations and a circled "C" in the final staff. The piece concludes with a double bar line.



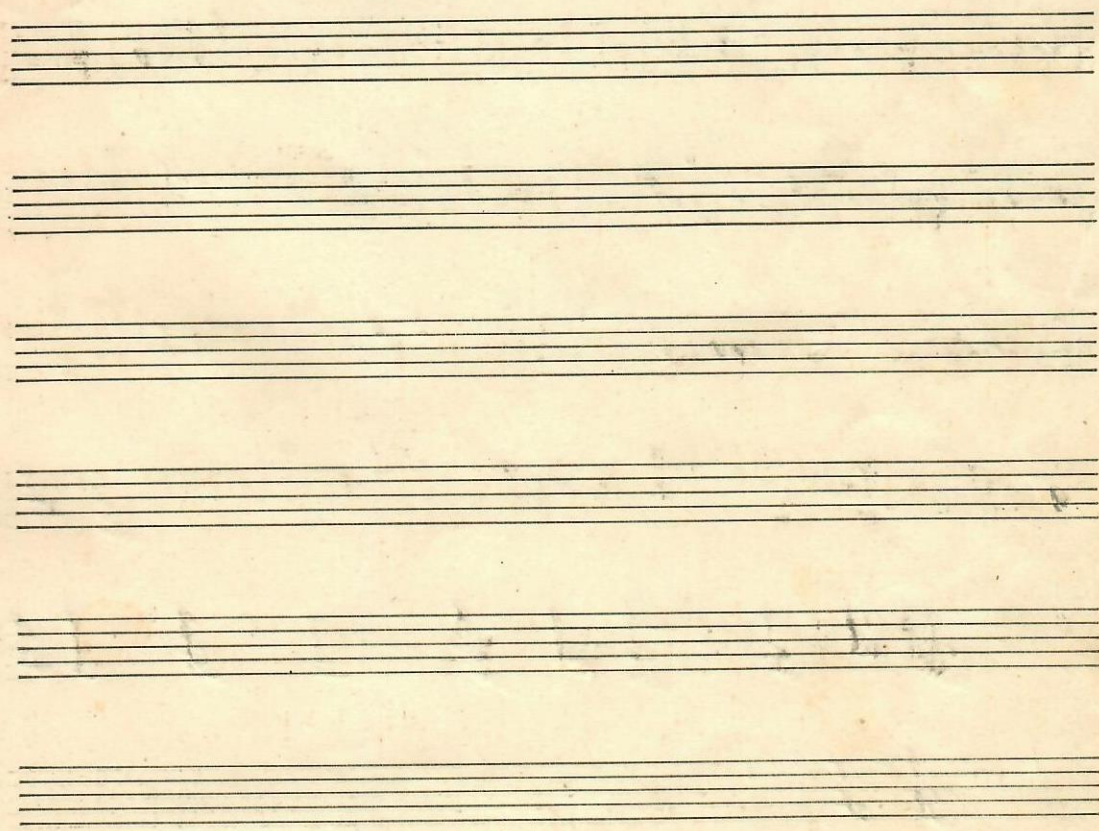
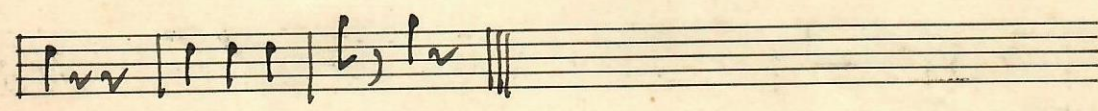
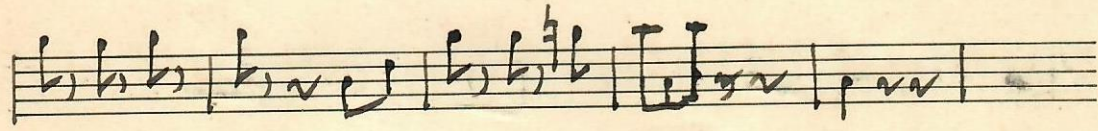
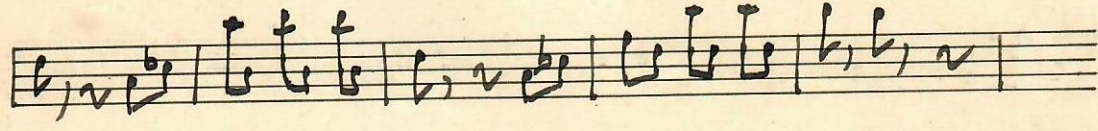
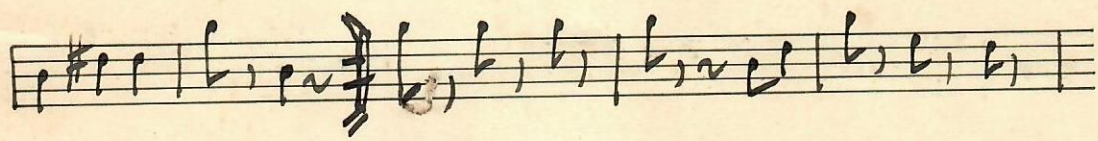
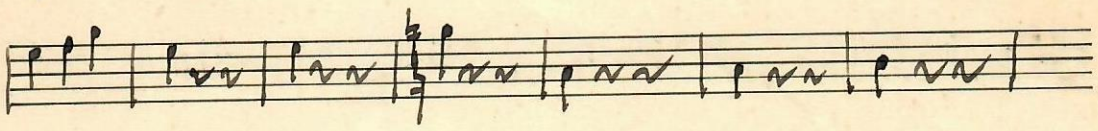
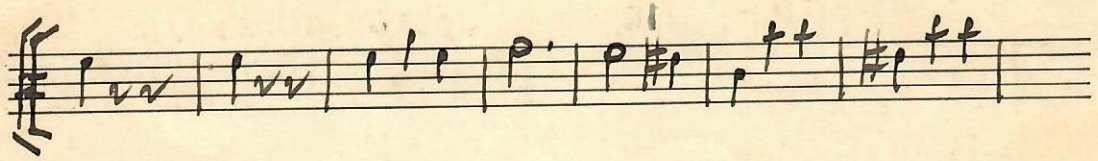
CELEBRE-MAZURKA - MIGLIAVACCA. O.

FA LA LA SI SI SOL
DO

I VARIAZIONE

II VARIAZIONE

TR



CANZONI VARIE -
Piemontese - Valzer

Andante

VALZER

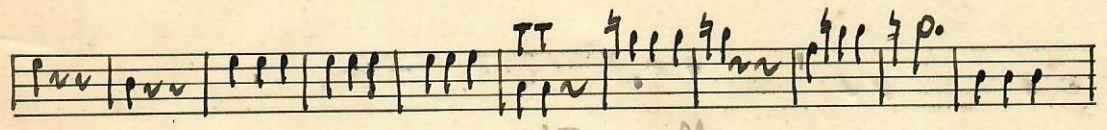
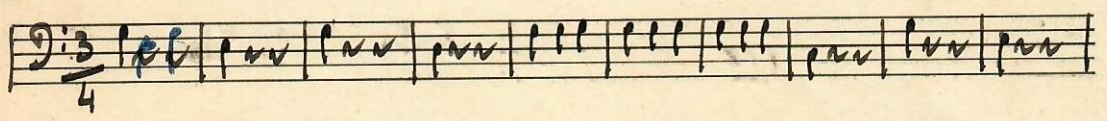
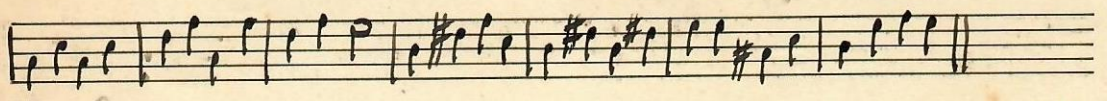
TANGO
CUMPARSITA

MARCA #0

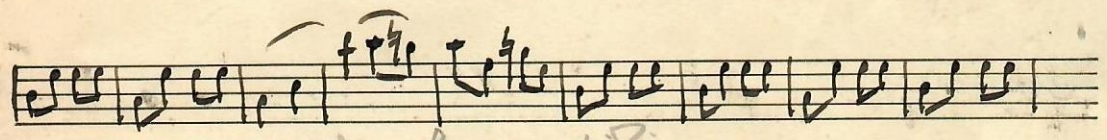
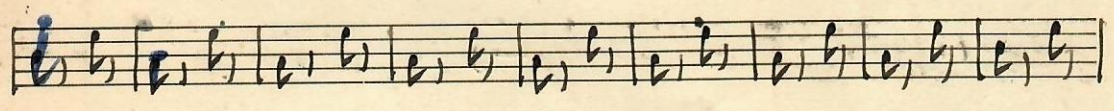
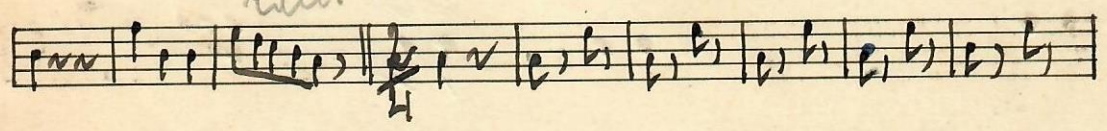
*rull sulla
cassa*

moll MAZURKA

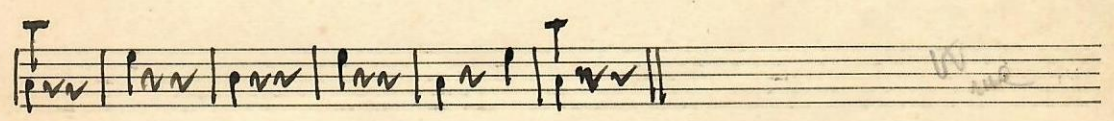
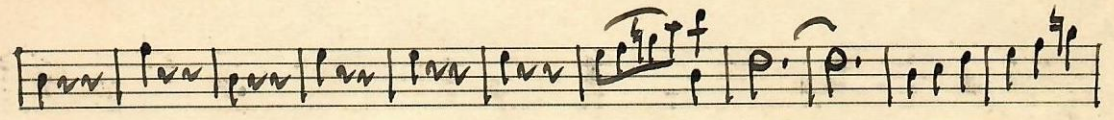
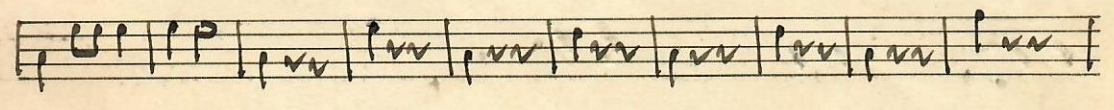
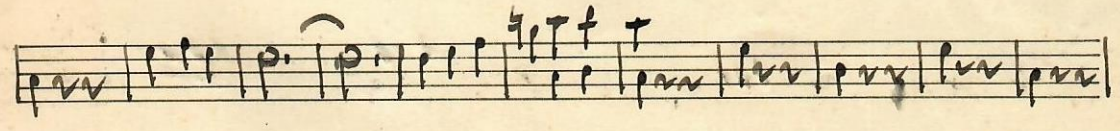
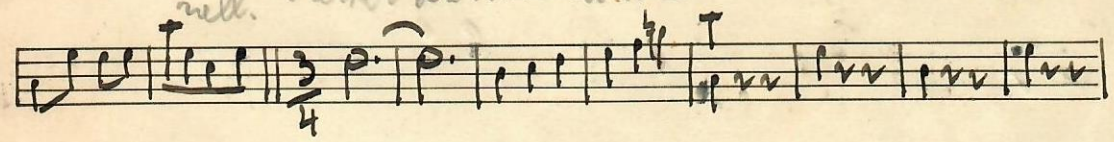
della Wagna



moll. Amor di Pastorella



moll. Valler Lu Tone di Pise



POLKA - IMPROVISO DI ALDROVANDI

Handwritten musical notation on a single staff, starting with a bass clef and a 2/4 time signature. The notes are grouped in chords, with the word "sol" written above the first measure.

Handwritten musical notation on a single staff. The notes are grouped in chords, with the words "sol", "sol", "do", "re", and "re" written above the measures.

Handwritten musical notation on a single staff. The notes are grouped in chords, with the words "mi", "si", "mi", "mi", and "la" written above the measures.

Handwritten musical notation on a single staff. The notes are grouped in chords, with the words "la", "re", "re", "sol", and "sol" written above the measures.

Handwritten musical notation on a single staff, continuing the chordal accompaniment.

Handwritten musical notation on a single staff. The word "TRIO" is written above the first measure. The notes are grouped in chords, with the words "do" and "sol" written above the measures.

Handwritten musical notation on a single staff. The notes are grouped in chords, with the words "sol", "do", "do", "do", and "re" written above the measures.

Handwritten musical notation on a single staff. The notes are grouped in chords, with the words "re", "sol", "re", and "re" written above the measures.

Handwritten musical notation on a single staff. The notes are grouped in chords, with the words "sol", "sol", and "do" written above the measures.

Four empty musical staves at the bottom of the page.

